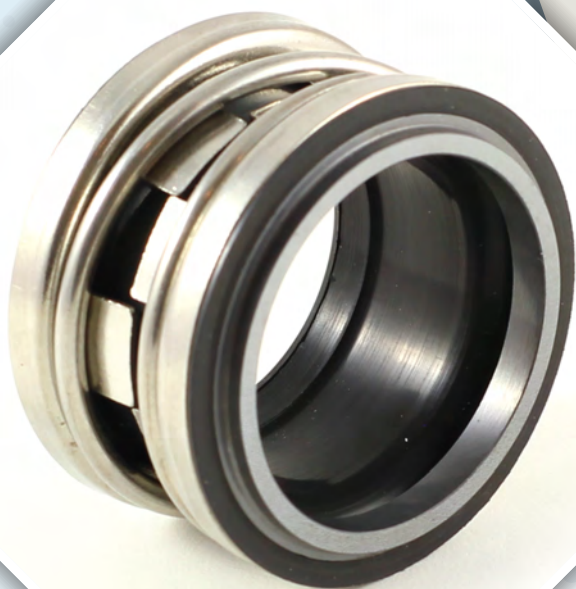


SF-21



DESCRIPCIÓN TÉCNICA

- Sello simple
- No Equilibrado
- Unimuelle
- Bi-direccional
- Fuelle de goma

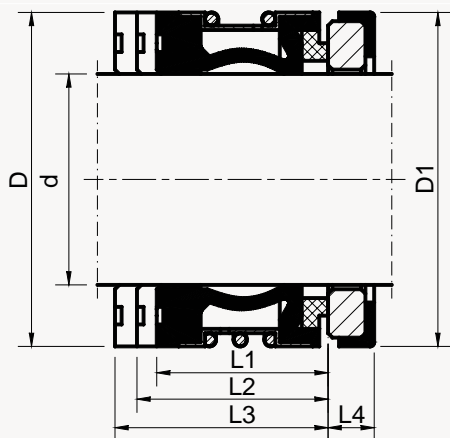
MATERIALES

- **Caras de Roca:**
Carburo de silicio (Q1), Carburo de tungsteno (U), Grafito (B).
- **Estacionario:**
Carburo de silicio (Q1), Carburo de tungsteno (U), Grafito (B), Cerámica (V).
- **Muelle:**
AiSi 304
- **Partes metálicas:**
AiSi 316, AiSi 304
- **Sello Secundario:**
NBR, FKM, EPDM.

LÍMITES OPERATIVOS

- $d1 = 10 - 100 \text{ mm}, 3/8 - 4''$
- $p1 = 1.8 \text{ MPa}$
- $t = -40 - 205 \text{ }^\circ\text{C}$
- $vg = 15 \text{ m/s}$

SECTORES:



Dimensiones

| d | D | D1 | L1 | L2 | L3 | L4 |
|----|----|----|----|------|------|----|
| 10 | 20 | 21 | 15 | 27.5 | 35.0 | 5 |
| 12 | 22 | 23 | 15 | 26.5 | 34.0 | 6 |
| 14 | 24 | 25 | 15 | 29.0 | 34.0 | 6 |
| 15 | 25 | 26 | 15 | 29.0 | 34.0 | 6 |
| 16 | 26 | 27 | 15 | 29.0 | 34.0 | 6 |
| 18 | 32 | 33 | 20 | 31.5 | 39.0 | 6 |
| 20 | 34 | 35 | 20 | 31.5 | 39.0 | 6 |
| 22 | 36 | 37 | 20 | 31.5 | 39.0 | 6 |
| 24 | 38 | 39 | 20 | 34.0 | 44.0 | 6 |

| d | D | D1 | L1 | L2 | L3 | L4 |
|-----|-----|-----|----|------|------|----|
| 25 | 39 | 40 | 20 | 34.0 | 44.0 | 6 |
| 28 | 42 | 43 | 26 | 36.5 | 44.0 | 6 |
| 30 | 44 | 45 | 26 | 35.5 | 43.0 | 7 |
| 32 | 46 | 48 | 26 | 35.5 | 48.0 | 7 |
| 33 | 47 | 48 | 26 | 35.5 | 48.0 | 7 |
| 35 | 49 | 50 | 26 | 34.5 | 47.0 | 8 |
| 38 | 54 | 56 | 30 | 37.0 | 47.0 | 8 |
| 40 | 56 | 58 | 30 | 37.0 | 47.0 | 8 |
| 43 | 59 | 61 | 30 | 37.0 | 52.0 | 8 |
| 45 | 61 | 63 | 30 | 37.0 | 52.0 | 8 |
| 48 | 64 | 66 | 30 | 35.0 | 50.0 | 10 |
| 50 | 66 | 70 | 30 | 37.5 | 50.0 | 10 |
| 53 | 69 | 73 | 30 | 37.5 | 60.0 | 10 |
| 55 | 71 | 75 | 30 | 37.5 | 60.0 | 10 |
| 58 | 78 | 78 | 33 | 42.5 | 60.0 | 10 |
| 60 | 80 | 80 | 33 | 40.5 | 58.0 | 12 |
| 63 | 83 | 83 | 33 | 40.5 | 58.0 | 12 |
| 65 | 85 | 85 | 33 | 40.5 | 68.0 | 12 |
| 68 | 88 | 90 | 33 | 40.5 | 68.0 | 12 |
| 70 | 90 | 92 | 33 | 48.0 | 68.0 | 12 |
| 75 | 99 | 97 | 40 | 48.0 | 68.0 | 12 |
| 80 | 104 | 105 | 40 | 47.5 | 77.5 | 14 |
| 85 | 109 | 110 | 40 | 47.5 | 77.5 | 14 |
| 90 | 114 | 115 | 40 | 52.5 | 77.5 | 14 |
| 95 | 119 | 120 | 40 | 52.5 | 77.5 | 14 |
| 100 | 124 | 125 | 40 | 52.5 | 77.5 | 14 |

Dimensiones en Milímetros